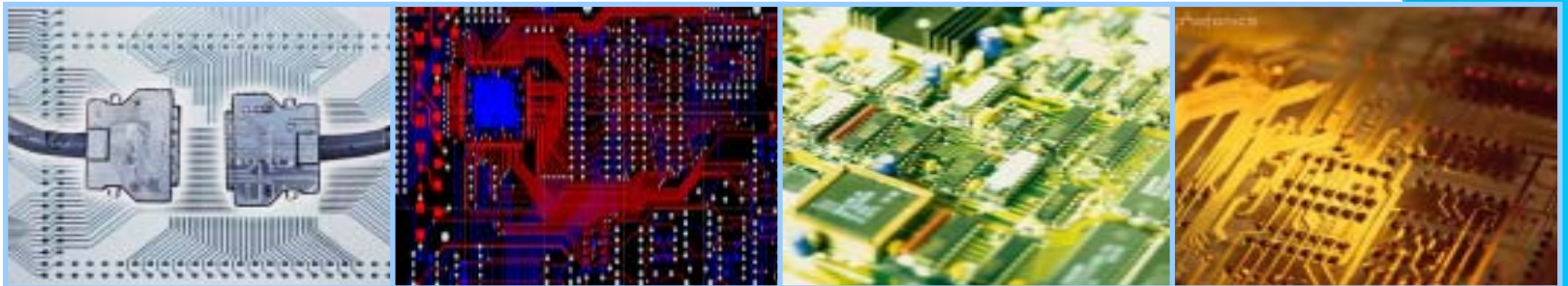


# **PARKLANE - PCB Manufacturer**

**Global PCB Express Value-added Service Provider**

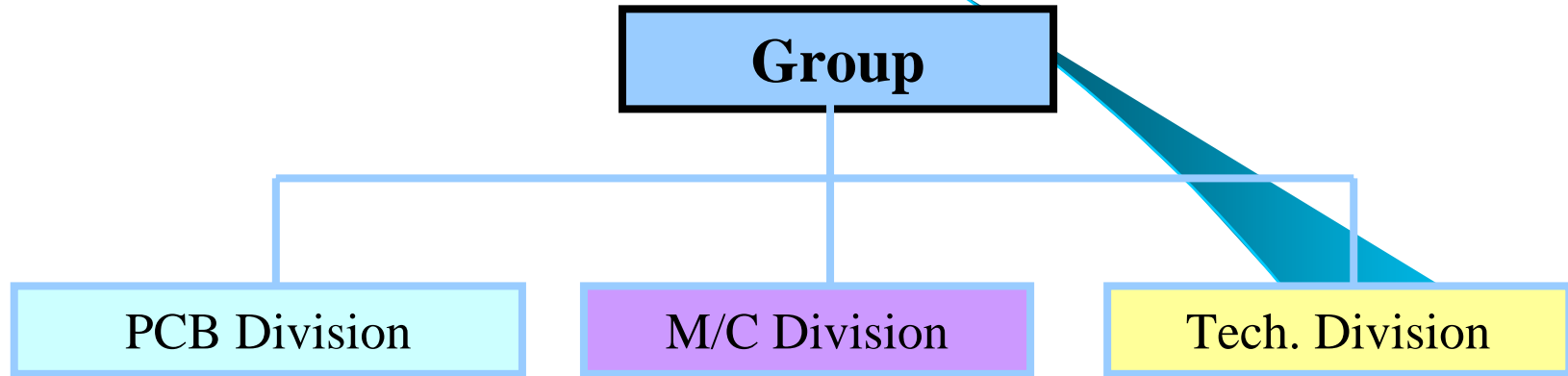


Version. 2005



**Hi Quality+Quick Turn+one-stop Service**

## PARKLANE Group View



### PCB Manufacturing :-

- Quick turn & Small volume
- Prototype
- Single to Multilayer PCB
- Flexible PCB
- HDI

### PCB machinery :-

- PCB Full-Automatic Production Line Accommodation
- PCB Periphery Machines

### PCB materials :-

Di-/Multi-functional Laminate, Prepreg, Dry film, LPI, Drill Bit & Router

### Others :-

PCBA, LED Projects, Metallic Parts Fabrication

## Corporate Profile

- ❖ **PARKLANE** group founded in 1998 and headquarter in Hong Kong
- ❖ PCB Workshops:  
Huizhou, Guangdong, China (high volume production)
- ❖ Sale and Service Center:  
Hong Kong office
- ❖ Employee: 700 persons
- ❖ Plant area of 20,000sqm
- ❖ Monthly capacity is over 250,000 FT2

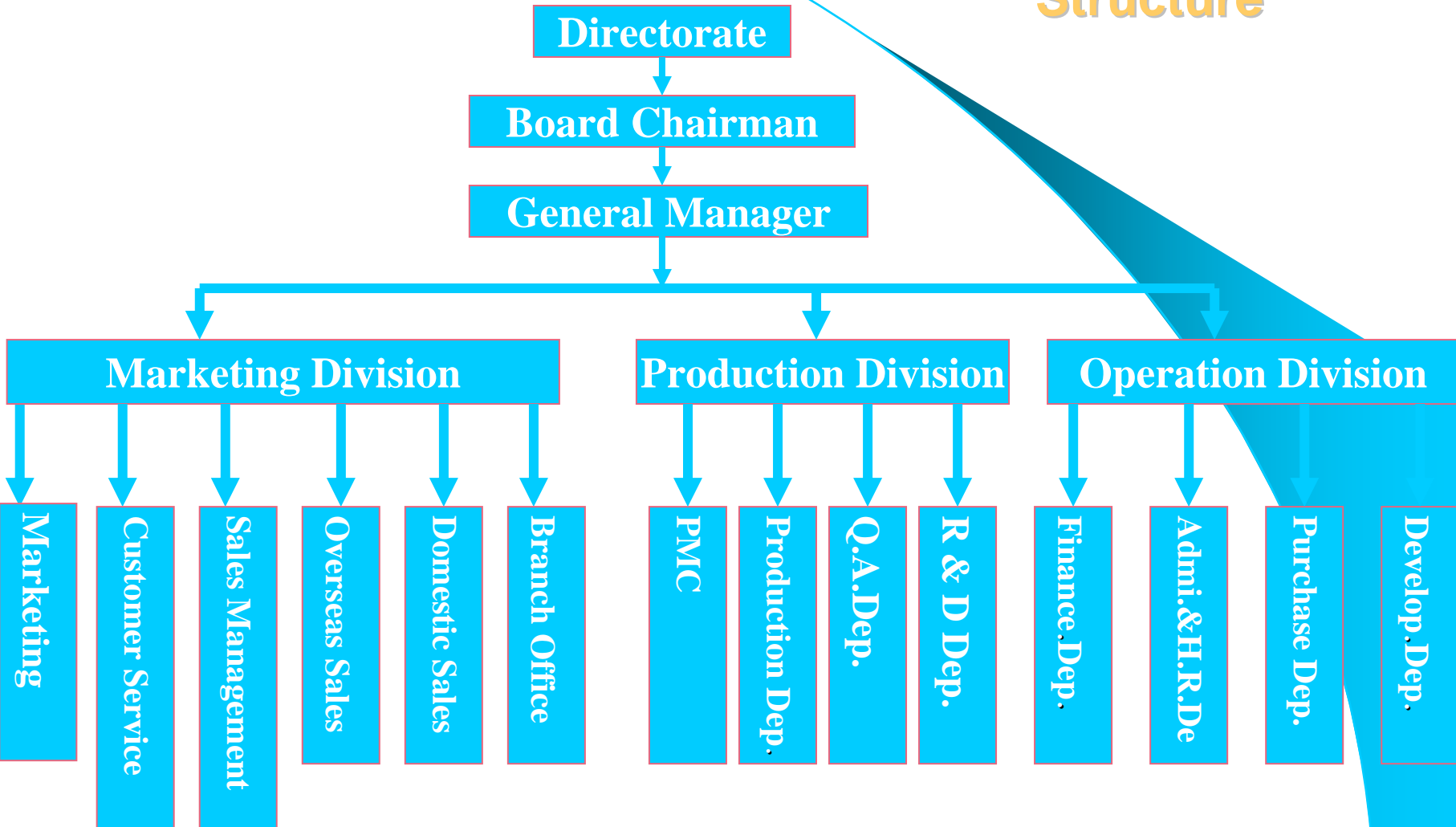
## Who We Are

- ❖ Hi-tech Enterprise approved by China Gov.
- ❖ 8 years' experience in prototype and quick turn and know-how
- ❖ One-stop and PCB value-added service provider
- ❖ 2200 value customers approved
- ❖ CPCA member



Hi Quality+Quick Turn+one-stop Service

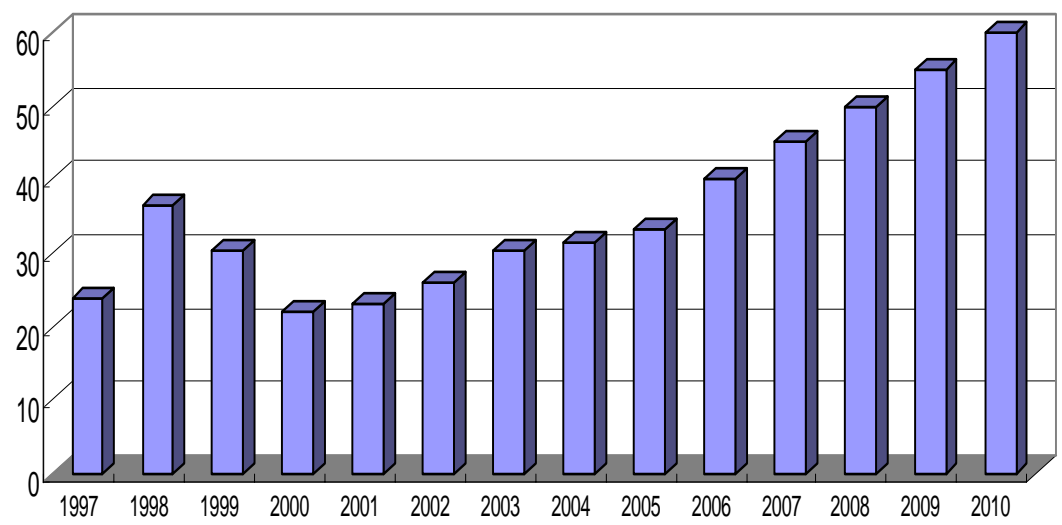
## Our PCB Shop Structure



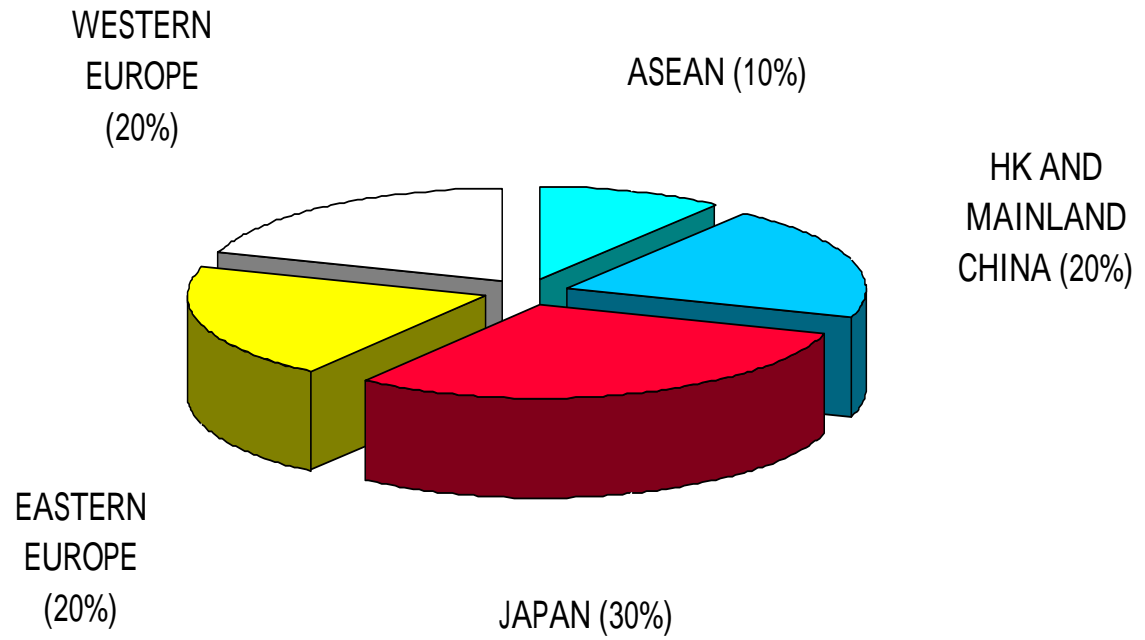
Hi Quality+Quick Turn+one-stop Service

## Sales Analysis

ANNUAL SALES (MILLION USD)



### Sales by regions



## What we do special

### PROTOTYPE

High Quality

Quick Turn

### SMALL VOLUME

Express

### MASS PRODUCTION

Competitive Cost

### STENCIL & SMT

One-stop Shopping

DFM Training

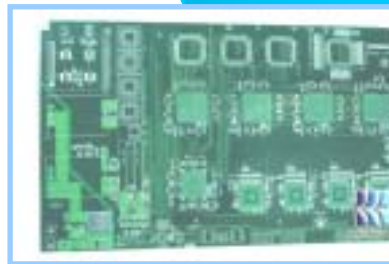
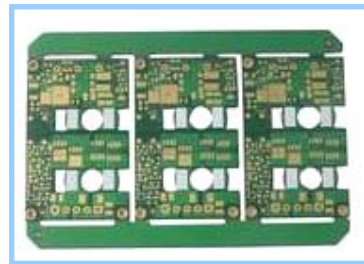
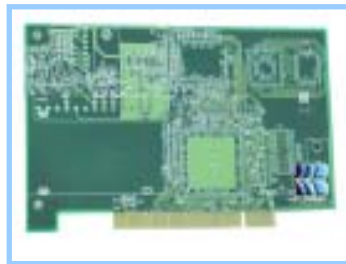
Design & Layout





## Our Product

- ❖ Prototype PCB
- ❖ Multilayer PCB up to 20 layers
- ❖ Aluminum based PCB
- ❖ Copper based PCB
- ❖ High frequency PCB
- ❖ High Tg thick copper PCB
- ❖ Mix-material multilayer PCB
- ❖ Flexible PCB



## Production Capacity

❖ Production Capacity: 250,000 FT<sup>2</sup>

❖ Key Equipments:

AOI	CAMTEK806	Israel
Impedance tester	CITS500S	Britain
Fly probe tester	PROBOT880	USA
Exposure	ORC-5K	Japan
Press	4820	USA
C Driller	WD-02	HK



**Normal Lead Time for Prototype**

LAYERS	LEAD TIME
2-layer	2 days
4-layer	4 days
6-layer	6 days
8-layer	8 days
10-layer	10 days
12-20 layer	10 days



## Technical Specification

- ❖ Min. Line Width/Space: 3mils/3mils(0.076mm/0.076mm)
- ❖ Min. Annular Ring Width: 3mils(0.076mm)
- ❖ Min. Hole Size: 8mils(0.2mm)
- ❖ Max. Board Thickness: 6.0mm
- ❖ Aspect ratio 10 : 1
- ❖ Max. copper weight: inner layer 5OZ(175um), outer layer 7OZ(245um)
- ❖ Max. Board Size: 2 layer 600 × 800mm, multilayers 500 × 800mm
- ❖ Layer coverage: 1-20 layer
- ❖ Min. Blind/Buried-via: 8mils(0.2mm)
- ❖ Impedance Control: +/-10%
- ❖ Surface technique: HASL (RoHS-Lead free), Flash Gold, OSP, Immersion gold/Tin/Ag, Electrolytic Ni/Au, Gold finger

## Value Grows From Professional Service

### ❖ Quick Response:

1-hour quotation

7 × 24 hours technical support

7 × 24 hours production run

FPC – depend on design

2-hour complaint

7 × 24 hours order service

7 × 24 hours delivery

### ❖ The World is Small:

Advanced global logistics network

E-business technology

### ❖ One-stop service:

Design for manufacture

Design & Layout

Components & Material

Stencil & SMT



Hi Quality+Quick Turn+one-stop Service

**Take Care You and  
Your Customers**

UL approval, file no.: E141822

ISO9001 Rev. 2000 Certification (SGS)

QS9000 Rev. 1998 Certification (SGS)

ISO14001 Rev. 1996 Certification (SGS)

Standard GB4588.2, GB4588.4 and IPC-A-600F(II)

High Tech Enterprise Certification

Project Management System

CRM System

ERP System

OA System





## Major Customers



## Marketing

❖ Telecommunication	50%
❖ Power supply	15%
❖ Electrical equipment	10%
❖ Medical equipment	8%
❖ Military industry	6%
❖ Consumer electronics	5%
❖ Science institution	3%
❖ Others	3%





## Our Team Shows You

**Passion**

**Initiative**

**Profession**

**Superexcellence**



**Development of the company benefits the customers, employee and the society**

**Hi Quality+Quick Turn+one-stop Service**

## Environmental Protection

Environmental protection is the responsibility of each enterprise; it is also our lifeline of PCB enterprise development; for protecting mankind common home, every member of **PARKLANE** will take part in environmental protection hand and foot.



## Best Choice -- Why **PARKLANE**?

- ❖ 8-year Quality Assurance Experience
- ❖ One-stop Shopping
- ❖ Quick Response
- ❖ Express Delivery
- ❖ Detail Quality Management
- ❖ 5-star Service
- ❖ 2500 customers from global market recommend



## Contact Us

### ❖ **Headquarter :**

Unit 16C, 5/F., Hewlett Centre, 54 Hoi Yuen Road,  
Kwun Tong, Kowloon, Hong Kong

香港九龍官塘開源道54號豐利中心5樓16C室

Tel : 852-2793 0308 Fax : 852-8343 8537

Email: [info@parklane-hk.com](mailto:info@parklane-hk.com)

Website: [www.parklane-hk.com](http://www.parklane-hk.com)

### ❖ **Contact person :**

Mr. Leo Li

General Manager

Mobile (HK) : 852-96504232

Mobile (China) : 86-1353 4101949





**Our Vision improves your yield.**

**Hi Quality+Quick Turn+one-stop Service**